



## HARDWARE CHARACTERISTICS

- 4-8 Video Inputs (PAL/ NTSC/ IP) & 16 IP
- H.264 Hardware Compression Onboard
- HDD storage capacity: 500 GB standard upgradeable to 1TB
- Internal Digital I/O
  - 4 Input 0 + 24 Vcc.
  - 4 Output NA/NC, 1 A @24Vcc.
- External Digital I/O (optional) 8 I/O:
  - 8 Input 0 + 24 Optional VDC
  - 8 Output NA/NC, 1 A @24Vdc, 0.5 A @250VAC (optional)
- Operating System on Compact Flash: 2GB
- (x2) PS/2 Ports
- (x2) USB 2.0 Ports
- (x1) 232 port with converter for 232-485 for PTZ Control
- (x1) 9-Pin RS-232 Serial Port I/O Serial optional external
- (x1) VGA Exit Port
- (x1) Gbps Ethernet Port
- (x1) 2.5 mm Audio Output
- (x1) 2.5 mm Microphone Input

## SOFTWARE CHARACTERISTICS

- Operating System: Windows XP Embedded
- Seamless Interface Between Local and Remote Connections
- Video compression algorithms (codecs)
  - Encoding H.264 hardware
  - Encoding Mjpeg software
  - Encoding Mpeg4 software
  - Native Encoding for camera IP
- Total Display Frame Rate for 8channel
  - 800 FPS @ 704 x 576 (4CIF)
- Total Recording Frame Rate for 8 channel
  - 800 FPS @ 704 x 576 (4CIF)
- Network Transmission Rate 10 fps (352x288@10fps and 75% quality):
  - 60 Kbps (Static Image).
  - 180 Kbps (Moving Image)
- Display & Recording Resolution Options
  - 352 x 288 (CIF)
  - 704 x 576 (4CIF)
- 18 Channel Independent Filters Minimize False Alarms
- Basic and Advance sensitivity regulation
- Prospective Correction ( for the PRO Version)
- Interactive Map ( for the PRO Version)
- Channel Independent Display & Recording Parameters
  - Resolution
  - Frame Rate
  - Quality
  - Continuous Recording
  - Up to 10 min. Pre Event Recording
- 7 Independent Viewer Modes:
  - 7x7, 6x6, 5x5, 4x4, 3x3, 2x2, 1 image/i; layout configurable
- 4 Different Event Notifications
  - Pop-Up Mode
  - Visual: red box, log
  - Audible: .wav, .mp3, buzzer
  - E-mail: HTML, text, SMS
- PTZ Movement Control (Automatic and Manual)
  - Three Rights Levels-
    - User, Power User, Administrator
- License Access with ARTECO-LOGIC & ARTECO-MOBILE
  - Version Ez: n° 2 simultaneous connections n° 3 user accounts
  - Version Pro: unlimited simultaneous connections and user accounts

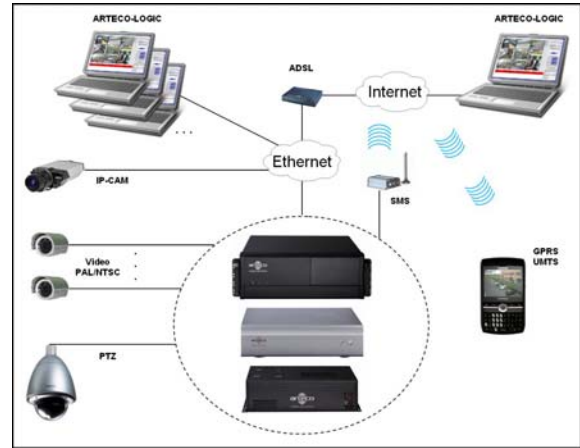
## ARTECO-MOBILE

Use Java-enabled Smartphone to access live video from IVS server (only for applicable cell phone)

## ELECTRICAL & PHYSICAL SPECS

- Power: 220 Vac, 50Hz, absorb. 120W
- Uninterrupted Power Supply (UPS) Required for Warranty Installation
- Operating Temperature: 0 + 40 °C, UR max 80% n.c.
- Dimensions:( L)11.4 x (W)14.2 x (H) 3.4 inch
- Weight 11.5 lbs

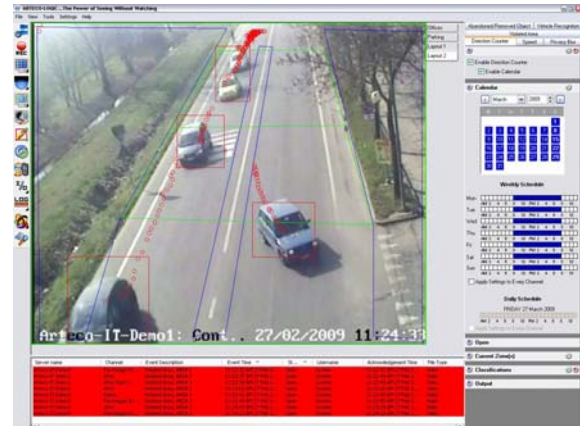
## HOW IT WORKS



## INTUITIVE INTERFACE




## INTELLIGENT VIDEOSURVEILLANCE




## ARTECO-MOBILE



### ARTECO VISION SYSTEMS

14515 North Outer Forty - Suite 150 - Saint Louis, MO 63017 – USA   
 Phone (314) 434-5331 Fax (866) 462-1323  
 www.ArtecoUS.com - info@ArtecoUS.com

### ARTECO IVS S.p.A.

Via Gentili, 22 – 48018 Faenza (RA) – Italy   
 Phone +39 0546 645777 - Fax +39 0546 645850  
 www.arteco.it - info@arteco.it