

ARTECO-LOGIC

ARTECO-LOGIC is the elite video management system software that seamlessly controls the world of ARTECO server appliances. Known throughout the Security Industry for its ease of use and accuracy, ARTECO-LOGIC is the culmination of over 20 years of Research & Development in machine vision analytics and video event management.



Real-Time Event Management

ARTECO-LOGIC provides state-of-the-art video management tools for real-time control over the security environment. When events are detected, the system alerts users with visual, audible and remote notifications. Video events are organized and stored in the Event Log detailing vital event information including server name, camera name, violation details, time/date of violation. This event line is detailed in bright red until it is viewed by security at which point that status changes to closed and the user who viewed the event is notated in the log with time and date of acknowledgement.

The "Pop-Up Mode" allows multiple users to acknowledge events on demand. When events occur, live-video from the channel the event took place on "pops-up" on the grid. The next available user double-clicks the event line in the event-

log, views the event and takes the proper countermeasure. After the event has been acknowledged, the live video drops off the grid and the event is changed to closed in the event log for all active users.

System Balance Flexibility

Keys to superior video management software include processor, network, and storage management. ARTECO-LOGIC has been engineered to maximize these three valuable resources with 100% channel customization for frames per second and resolution across three completely independent video streams for acquisition, display, and recording.

This revolutionary video architecture allows organizations to customize their video security resources based on what is important to their needs instead of compromising to a one-size-fits-all approach. Separate streams means video from the same camera can be analyzed at one resolution/fps to ensure the best results for the intelligent application, recorded at a different resolution/fps to ensure the best recordings for potential evidence, and displayed at a different resolution/fps to ensure efficient network transmission.

Superior Analytics

ARTECO-LOGIC uses up to 18 independent filters to isolate objects based on what matters most to the security environment.

When detected objects break user-defined rules, a security event is triggered and the ARTECO Intelligent Video Solution (IVS) springs into action.

Available in three versions: Basic, EZ and PRO, ARTECO analytics allow for the ultimate in flexibility between price and intelligent video capability per channel today. When compared to other leading analytics providers, no other system scores higher in ease of use and accuracy of detection than ARTECO-LOGIC.



FUNCTION AND MAIN FEATURES

- Complete remote control of all ARTECO Systems function
- Possibility to access up to 49 Video sources at the same time and an unlimited number of systems
- Remote access of the video archive from any PC
- Advance filter for the reduction of false alarms (up to 97%)
- Independent control of channel acquisition, recording and display frame rates/resolution
- Interactive map interface of security layout in second window (available on *PRO* version).

INTELLIGENT APPLICATIONS

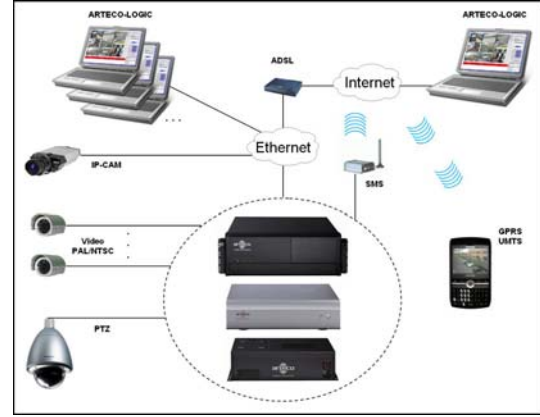
Examples of typical events configured by User-Defined rules of the ARTECO-IVS

- **People**
 - Unauthorized Entry
 - Building Occupancy Tracking
 - Linger Person
 - Fallen Person (hospital bed)
 - Gathering Crowd
 - Dispersing Crowd
- **Objects**
 - Abandoned Object
 - Removed Object
 - loitering Object
 - Counting Object
- **Vehicles**
 - Vehicle Classification
 - Vehicle Counting
 - Vehicle Speed Detection
 - Unauthorized Vehicle

SOFTWARE CHARACTERISTICS

- Operating System: Windows XP Embedded
- Seamless Interface Between Local and Remote Connections
- Video compression algorithms (codecs)
 - MJPEG, MPEG4, Encoding H264 Hardware.
- Compression Video Codec for channel IP
 - Native Flow channel IP
- Total Display Frame Rate
 - 25 FPS @ 704 x 576 (4CIF)
- Total Recording Frame Rate
 - 25 FPS @ 704 x 576 (4CIF)
- Network Transmission Rate (352x288@10fps with 75% quality):
 - 60 Kbps for static image -180 Kbps for Moving Image
- Display & Recording Resolution Options
 - 352 x 288 (CIF) - 704 x 576 (4CIF)
- 18 Channel Independent Filters Minimize False Alarms
- 2-Step Process for "Basic" Background Tuning
 - Advance Modality not present on ARTECO-4000 & ARTECO-6000
- Basic and Advance sensitivity regulation
- Prospective Correction (for the PRO Version)
- Interactive Map (for the PRO Version)
- Channel Independent Display & Recording Parameters
 - Resolution
 - Frame Rate
 - Quality
 - Continuous Recording
 - Up to 10 min. Pre Event Recording
- 7 Independent Viewer Modes:
 - 7x7, 6x6, 5x5, 4x4, 3x3, 2x2, 1 image/i; layout configurable
- Event Notifications
 - Pop-Up mode
 - Visual: red box, log
 - Audible : .wav ,.mp3, buzzer
 - E - mail: HTML jpeg , text, SMS
- PTZ Movement Control (Automatic and Manual) Three Rights Levels
 - User, Power User, Administrator
- License Access with ARTECO-LOGIC
 - Distinction between configurable user accounts and multiple users connected simultaneously.

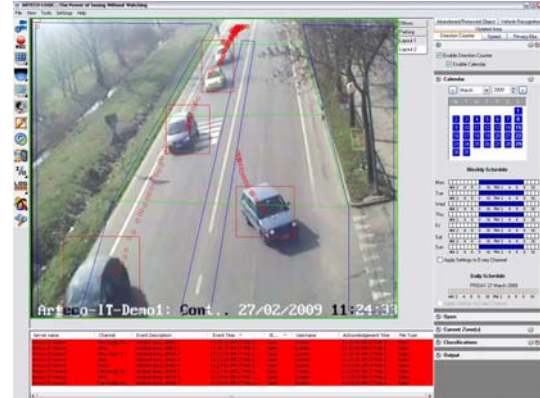
HOW IT WORKS



INTUITIVE INTERFACE



INTELLIGENT VIDEOSURVEILLANCE



ARTECO VISION SYSTEMS

14515 North Outer Forty - Suite 150 - Saint Louis, MO 63017 - USA
Phone (314) 426-5331 Fax (866) 462-1323
www.ArtecoUS.com - info@ArtecoUS.com

ARTECO IVS S.p.A.

Via Gentili, 22 - 48018 Faenza (RA) - Italy
Phone +39 0546 645777 - Fax +39 0546 645850
www.arteco.it - info@arteco.it