

ARTECO-VEHICLE



- MOBILE VIDEOSURVEILLANCE
- ON DEMAND CONNECTION
- BIDIRECTIONAL AUDIO
- GPS POSITION

ARTECO-VEHICLE is a 1-4 channel video surveillance system specially designed for transportation security. ARTECO-VEHICLE was designed to allow the viewing of live and recorded video feeds as well as provide access to audio which is made possible through a high-speed internet connection to the main control unit. The high-speed internet connection in conjunction with the GPS detection ability of ARTECO-VEHICLE allows for real-time accurate responses.

ARTECO-VEHICLE is accessed through ARTECO-LOGIC which is the standard client software for all ARTECO IVS surveillance systems. Depending on connection bandwidth, ARTECO-LOGIC can manage countless systems allowing personnel to monitor previously recorded and live images.

Four Steps to Alarm Management with ARTECO-VEHICLE:

1. **Real-Time Alert Notification:** Through a hidden, yet easy-to-reach button, the driver sends out the signal of a dangerous situation.
2. **High speed internet connection:** When the button is pressed the system connects to the internet network and starts sending live video to the Main Control Unit.
3. **Connection to the Main Control Unit:** At the central security location for the organization, security personnel receive the live video Pop-Up on the ARTECO-LOGIC software, automatically drawing the attention of the operator. The operator watches the video and listens to the audio and takes the appropriate countermeasure.
4. **Disconnection:** Once the dangerous situation has been evaluated and it is not necessary to keep the connection open, the driver presses a second button to close the connection. The security operator at the main control unit may also terminate by clicking the "close connection" command.



HARDWARE FEATURES

- 4 hybrid video inputs (PAL, NTSC, IP).
- Hard Disk 250 GB (500 GB optional)
- 2 digital inputs to enable/disable connection
- Compact Flash 8GB
- 6 USB2.0 ports
- 6 COM ports (to enable or disable connections)
- 1 VGA output
- 1 DVI output
- 2 Ethernet 100Mbps port
- 1 audio jack 2.5mm output
- 1 microphone 2.5mm input
- Power supply 7 - 32 VDC

UMTS/GPRS Modem:

- UMTS (2100MHz)
 - UE Power Class 2 (+24dBm)
- GPRS (Bands: 850/900/1800)
 - Multislot (E)GPRS Class 10, (E)GPRS Class B Type 1 MT

GPS aerial:

20-channel receiver

SOFTWARE FEATURES

Unique remote interface

Video compression Codec

- MJPEG, MPEG4 and H.264

Maximum display frame rate
- 25 FPS @ 704 x 576 (4CIF) (according to bandwidth)

Maximum recording frame rate
- 25 FPS @ 704 x 576 (4CIF)

Transmission band (352x288@10fps, quality 75%):

- 60 Kbps for static images.

- 180 Kbps for moving images.

Display and recording resolutions

- 352 x 288 (CIF)

- 704 x 576 (4CIF)

For each channel independent regulation of:

- Resolution

- Frame rate

- Quality

- Basic motion detection

- Privacy blurring

- Event-based continuous and accelerated recording

- Pre-event queue up to 10 minutes

Screen display:

- 7x7, 6x6, 5x5, 4x4, 3x3, 2x2, 1 image/s

- Pop-Up of the view concerned

4 event notifications:

- Visual: red frame of the image, event log

- Acoustic: WAV, MP3, PC buzzer sounds

- E-mail: HTML with pictures and text

- SMS

3 levels of user rights

- User, Power User, Administrator

Access authorization from ARTECO-LOGIC or ARTECO-MOBILE

- 1 simultaneous connection

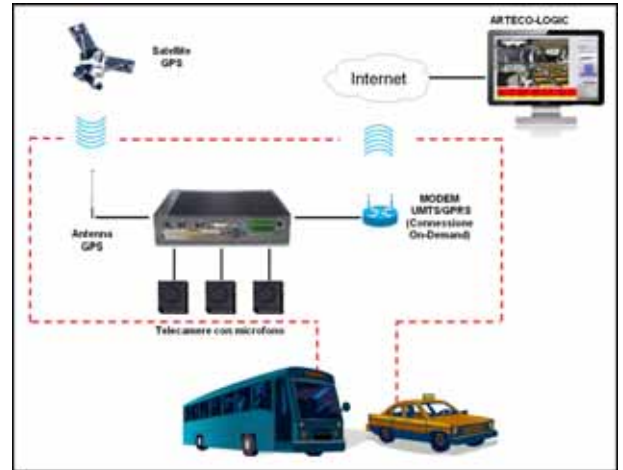
- 2 user accounts

- Upgrade of simultaneous connections and additional users (optional)

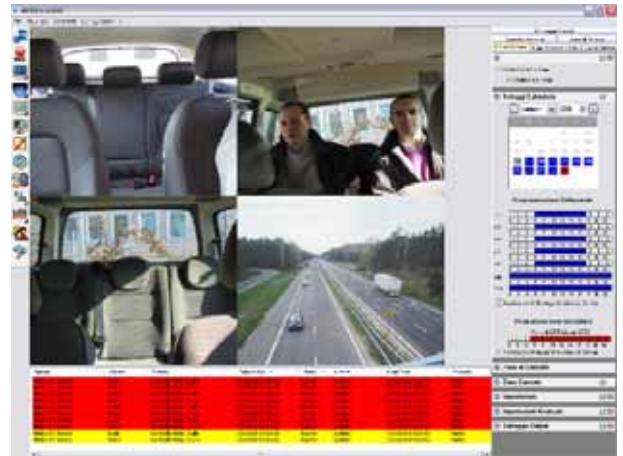
ELECTRICAL AND PHYSICAL SPECIFICATIONS

- Power Consumption: 9-32 Vdc max 100 W (220 VAC Power Supply included)
- Operating Temperature: 0 ÷ 40° C, UR max 80% n.c.
- Dimension in mm.: Length=265 Height=60 Depth=190
- Weight: 5.5 lbs

HOW IT WORKS




ALARM CENTRALIZATION




GPS TRACKING



ARTECO VISION SYSTEMS

14515 North Outer Forty - Suite 150 - Saint Louis, MO 63017 - USA 
Phone (314) 434-5331 Fax (866) 462-1323
www.ArtecoUS.com - info@ArtecoUS.com

ARTECO IVS S.p.A.

Via Gentili, 22 - 48018 Faenza (RA) - Italy 
Phone +39 0546 645777 - Fax +39 0546 645850
www.arteco.it - info@arteco.it