



ARTECO

INTELLIGENT VIDEO SOLUTIONS



*The Power of Seeing...
Without Watching*



Downtown Parking Facility

St. Louis Parking Company is the oldest and largest parking company in the St. Louis region, serving the market through more than 100 facilities capable of housing in excess of 40 thousand vehicles daily. St. Louis Parking focuses on providing motorists with parking facilities noted for their convenience, efficiency, cleanliness, and safety. Security concerns at this new state-of-the-art downtown facility include the safety of customers, vehicles and staff from theft and vandals.



Customer Concerns

- Facility Customer Safety
- Vehicles break-in, theft, and vandalism
- Parking Capacity Tracking
- Employee Safety
- Employee Monitoring

Arteco Solution

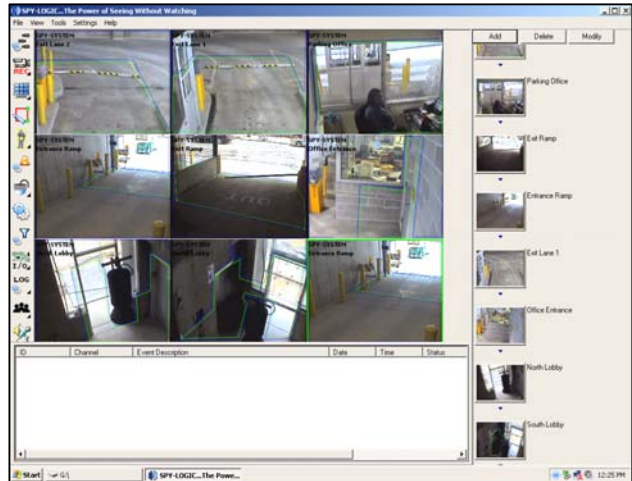
- Violated Area applications detect entry in restricted areas in real-time.
- Direction detection alerts when vehicles go incorrectly through one-way paths.
- Loitering persons in parking facility are detected and alerted to security.
- Each vehicle who enters or leaves facility is recorded as a "time-stamped" image.

What they say about us

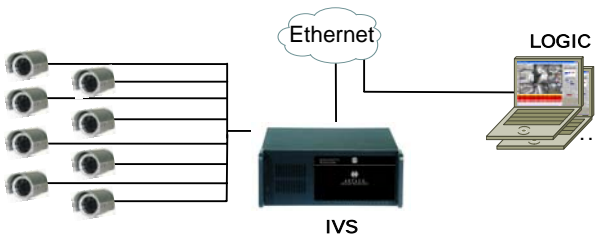
Interior Setting



Active Detection



System Diagram



Vehicle Time-Stamping Entry and Exit

