

ARTECO-SERVER



THE SOLUTION

Arteco has built its reputation on providing vertically integrated (hardware and software) video security solutions with built-in analytics. This extensive technical expertise and the advancement of IP Video technology has made it possible to offer our video management software as a hardware independent (software-only) solution. The implementation of ARTECO-SERVER allows customers to build on their existing server infrastructure while realizing the real-time detection and resource management of the ARTECO architecture on a licensed basis. Multiple locations can be integrated and managed from the powerful client software ARTECO-LOGIC.

ADVANTAGES

Manage an Unlimited Number of Servers

An unlimited number of servers managing infinite amounts of cameras can be centralized to a single client. Seamlessly integrate your hardware-independent solution with pre-existing ARTECO-IVS servers.

Self-Defined Limits For Video Archiving

ARTECO-SERVER allows you to specify the hardware that best suits the needs of your organization and define how much video storage will be required instead of a one-size-fits-all approach.

Simplified Centralization with Advanced Layout Management

ARTECO-SERVER allows you to create and manage unlimited layouts displaying cameras from multiple locations throughout your organization. Shape channel size based on importance, rename layouts based on location, and lock necessary cameras onto the grid. Tour feature allows multiple layouts to be cycled through in pre-set time sequences.

Acquisition Encoder developed for Efficient Recording

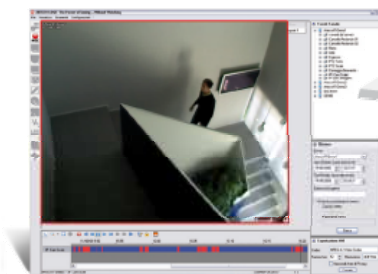
Ability to choose between MJPEG, MPEG4, H.264, MxPEG.

Bandwidth Optimization

Independent control of network display transmission for live video and recording parameters for archived video allow users to maximize bandwidth usage on a multi-site centralized solution. "Pop-Up" feature allows video to only be streamed when events of interest take place to help conserve bandwidth.

Built-in Analytics

Each license includes built-in Analytics from Arteco ready to go from first installation instead of complicated and costly 3rd party analytics integrated as an "add-on" to the video management software.




TECHNICAL CHARACTERISTICS



Small Business

- Video Channels: Up to 32 (minimum 1)
- Simultaneous User Connections: 1 (expandable)
- User Accounts: 2 (expandable)
- Multi-Site Centralization Ability not included
- Video Compression compatibility
MJPEG (LIVE only)
MPEG4 (LIVE only)
Native Camera Stream (LIVE and REC)
(MJPEG, MPEG4, H.264, MxPEG)

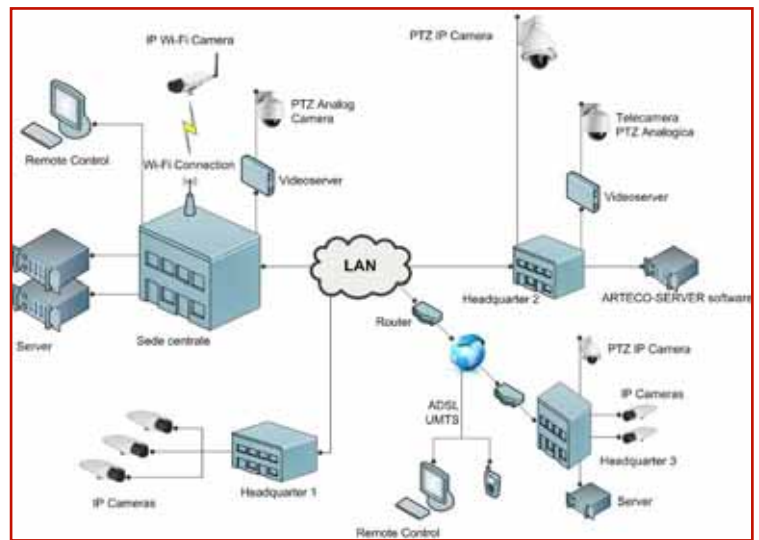


Corporate

- Video Channels: Unlimited (minimum 4)
- Simultaneous User Connections: 2 (expandable)
- User Accounts: 4 (expandable)
- Multi-Site Centralization Ability included
- Video Compression compatibility
MJPEG (LIVE only)
MPEG4 (LIVE only)
Native Camera Stream (LIVE and REC)
(MJPEG, MPEG4, H.264, MxPEG)

- Compatible Operating Systems: Windows XP – Vista – Server 2003/2007 – 7
- Network Transmission Rate (352x288@10fps with 75% quality):
 - 60 Kbps for static image -180 Kbps for Moving Image
- Display & Recording Resolution Options
 - 352 x 288 (CIF) - 704 x 576 (4CIF)
- Channel Independent Display & Recording Parameters
 - Resolution
 - Frame Rate
 - Quality
 - Continuous Recording
- 7 Independent Viewer Modes:
 - 7x7, 6x6, 5x5, 4x4, 3x3, 2x2, 1 image; configurable layout
- Event Notifications
 - Pop-Up mode
 - Visual: red box, log
 - Audible : .wav, .mp3, buzzer
 - E-mail: HTML, jpeg, text
- Three Rights Levels
 - User, Power User, Administrator
- Digital Zoom on both Live and Recorded Images
- Pop-Up Mode drives live video to layout when events occur
- Ability to auto-tour multiple pre-configured layouts
- Ability to move PTZ camera function manually or automatically

HOW IT WORKS



ANALYTICS ALGORITHMS

	Violated Area	Abandoned Object	Vehicle Recognition	Direction Counter	Speed Control	Traffic Control	Privacy Blur	Virtual I/O	Maps	Perspective
Small Business	✓	-	-	-	-	-	✓	-	-	-
Corporate	✓	Opt.	Opt.	Opt.	Opt.	Opt.	✓	Opt.	Opt.	Opt.